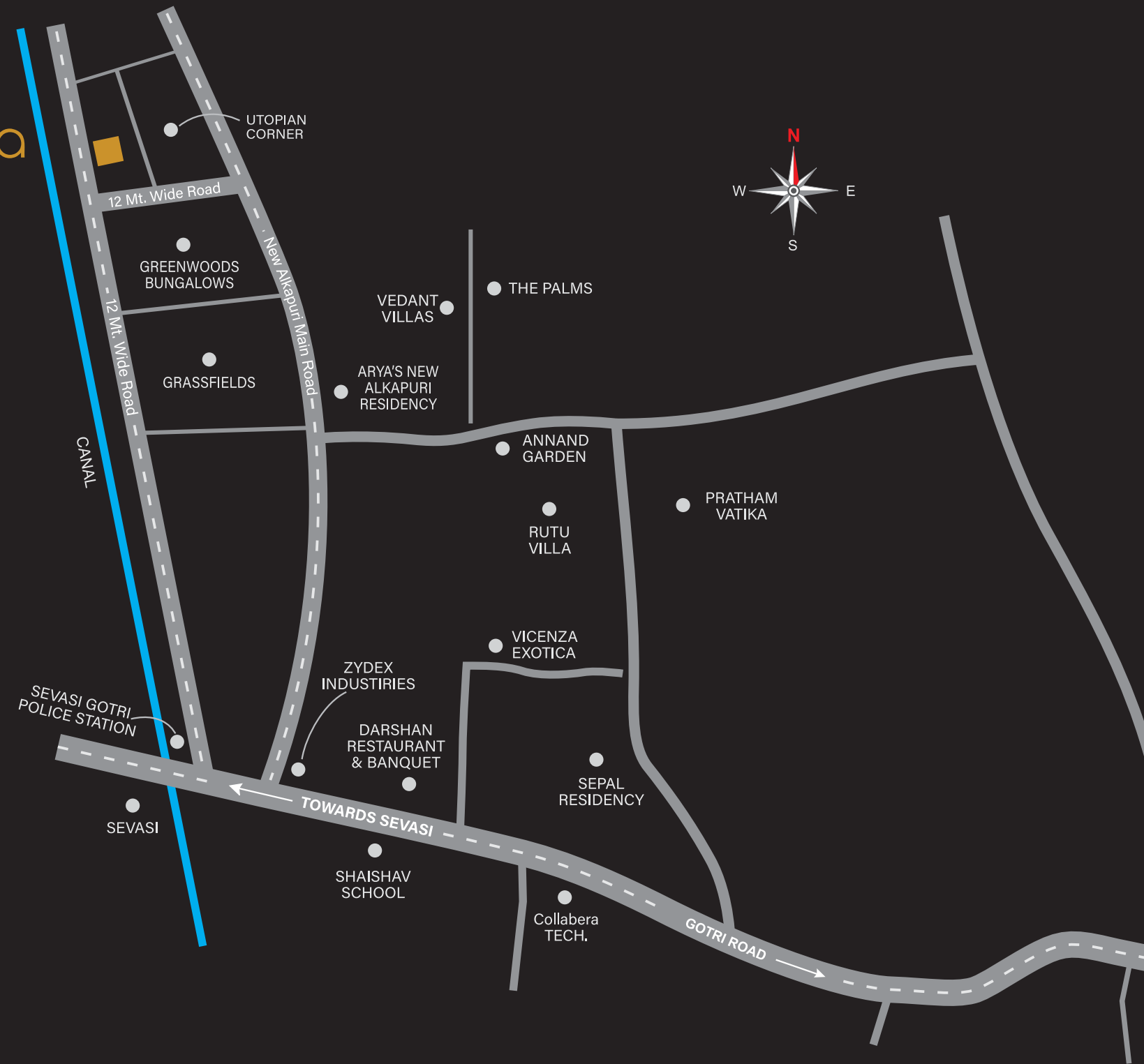


aldea  
PRIMERO



**Structure Consultant**  
VYOM Consultants

**Architect**  
Rishi Architect

**E-mail**  
contact@aldeacreators.com

**Contact Details**  
+91 96240 93999 | +91 96240 83999

**Site Address**  
Aldea Primero, Behind Utopian Corner,  
New Alkapuri, Ankodiya-Khanpur T.P.-2,  
Vadodara, Gujarat - 391101.

**We request.....**

Possession will be given after 30 days from settlement of all accounts. • Maintenance Charge, stamp duty, registration charges, GST, municipal taxes, electricity connection charges & legal cost will be extra. • Central or State Government Taxes, if applicable shall have to be borne by the clients. • Continuous default payments lead to cancellation. • Refund in case of cancellation will be made within 30 days from the date of booking of new client only. The administrative expense of Rs. 25,000/- will be charged on cancellation of Booking. • Architect/Developers shall have the right to change or raise the scheme or any details herein and any change or revision will be binding to all. • Developer reserve the right to amend the layout, plans, no of units, elevation, colour scheme, specifications & other amenities. • Project completion expected time may vary as it is highly dependent on external factors like labour, material availability and approvals from various authorities. • The Contents of this brochure are purely conceptual and have no legal binding on us.

RERA Reg. No: PR/GJ/VADODARA/VADODARA/Others/RAA07511/290920 | WEB : gujrera.gujarat.gov.in

*14 Supreme Residences  
for a Modern Lifestyle*

Project By

aldea  
CREATORS

aldea PRIMERO

*Redefining Modern Luxury*

www.aldeacreators.com



aldea PRIMERO  
*Redefining Modern Luxury*

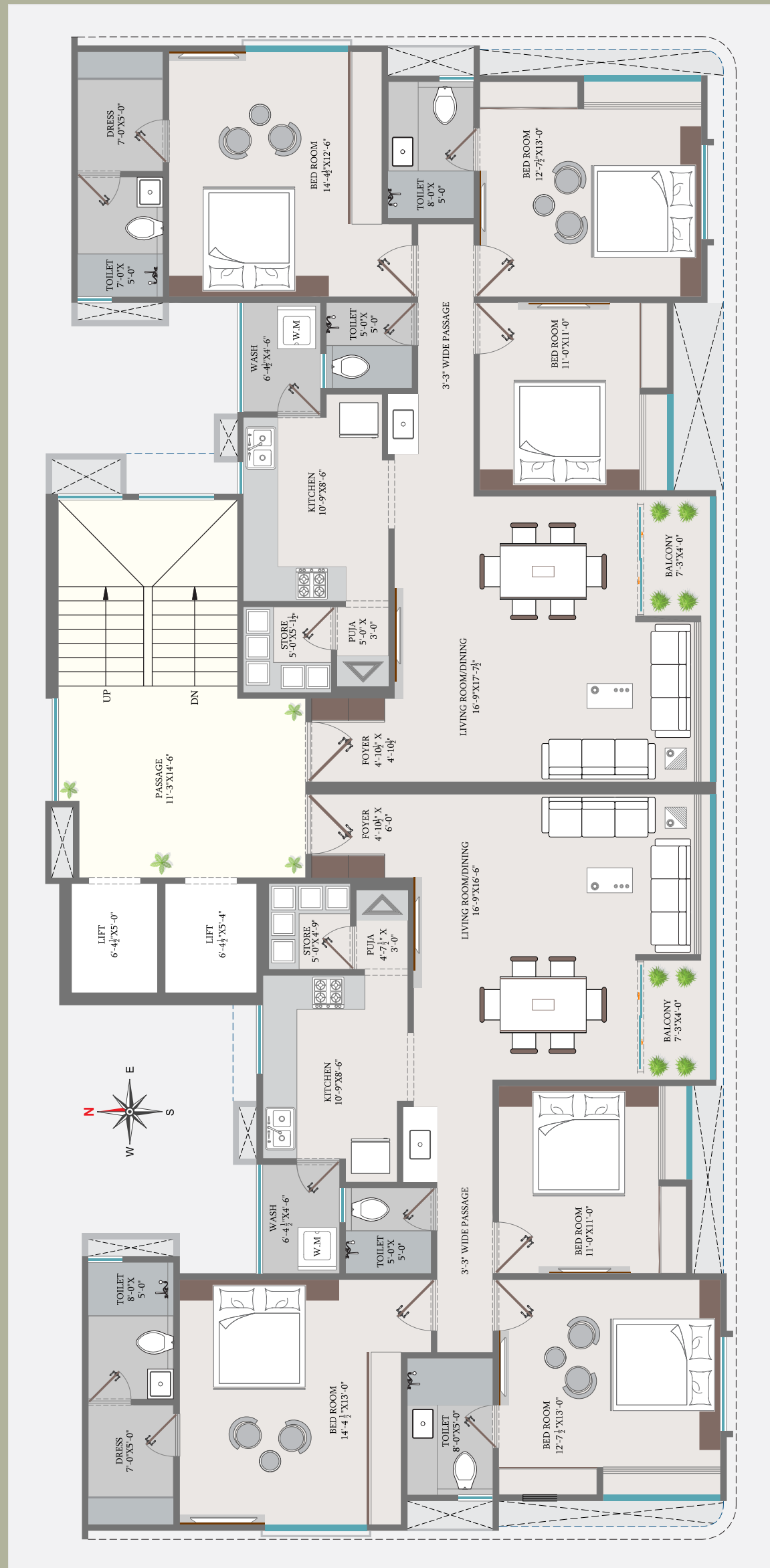


*Discover Captivating Creativity  
for the First Time  
in Vadodara!*



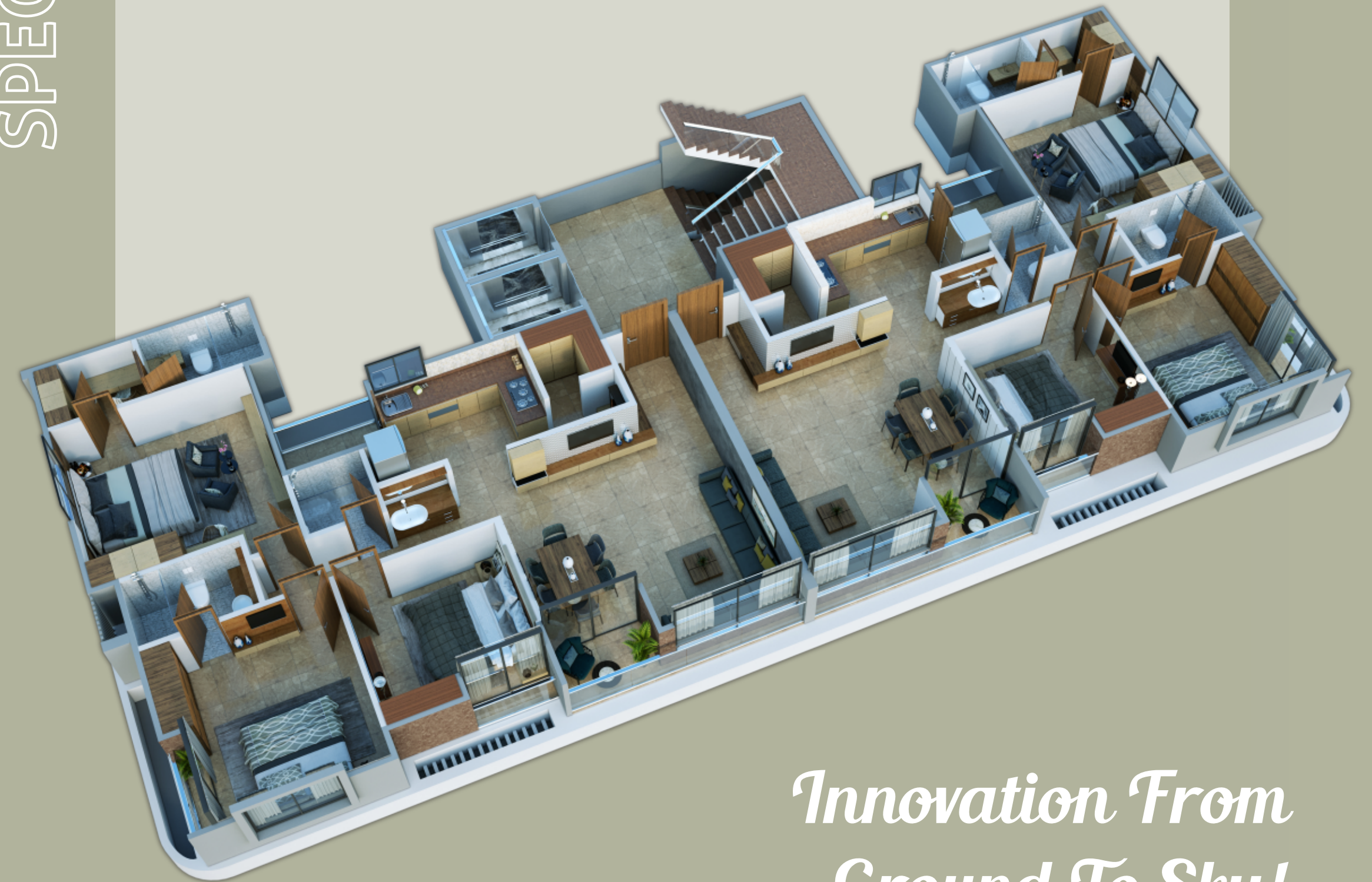


# 3 BHK FLOOR LAYOUT



## SPECIFICATION

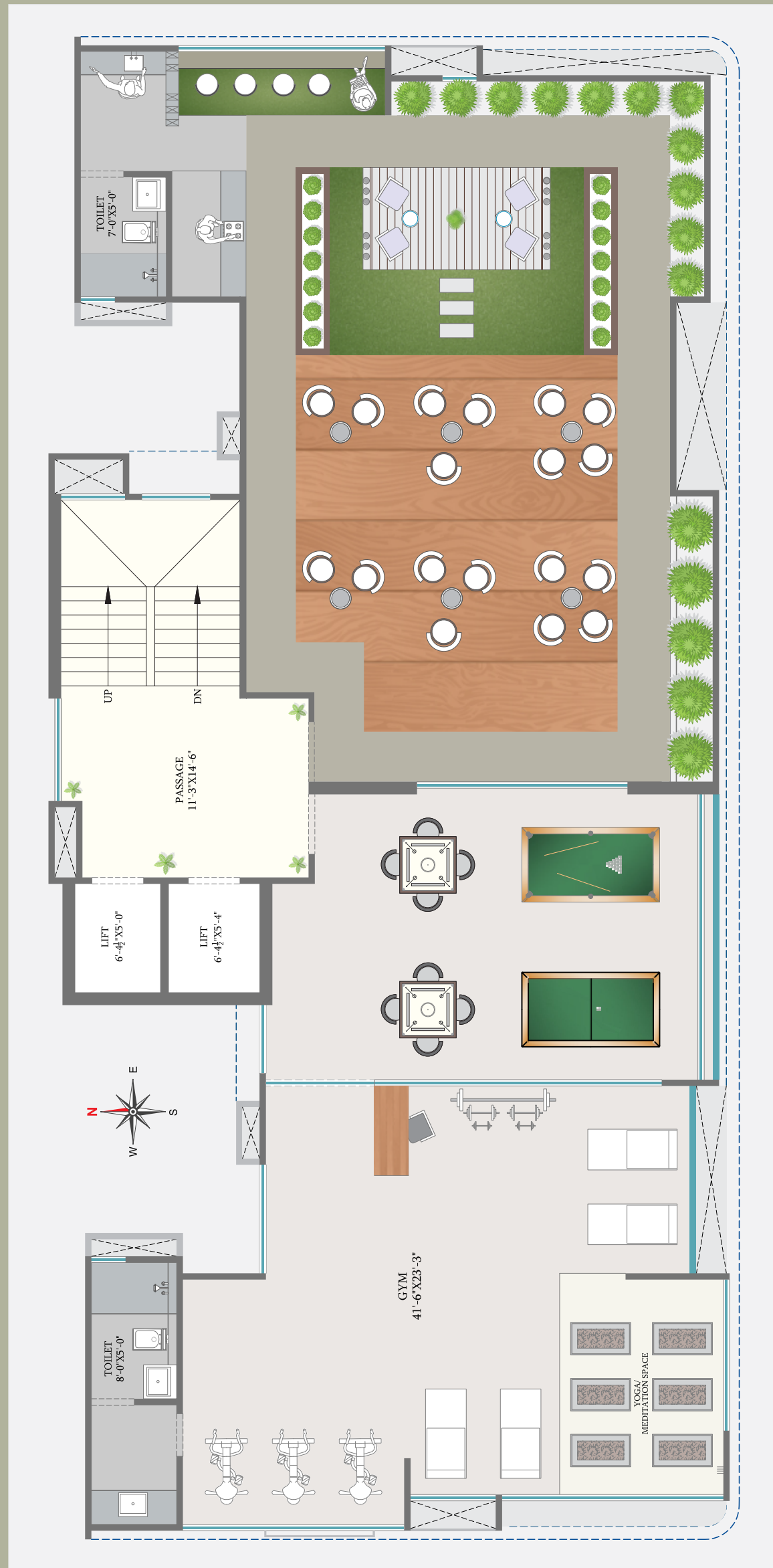
- 
**FLOORING**  
 Vitrified tiles flooring with skirting in entire Apartment.
- 
**WATER SUPPLY**  
 Underground and overhead tank 24 hours water supply with water softener plant.
- 
**ELECTRIFICATION**  
 Concealed copper wiring Branded quality modular switch with sufficient electric points. A.C points in all bedroom.
- 
**STRUCTURE**  
 Earthquake resistant structural design. Energy efficient structure by using AAC blocks, considered as Worlds Wonder Building material.
- 
**KITCHEN**  
 Granite platform with stainless steel sink. Vitrified tile flooring Ceramic tiles up to 2 ft. height over the platform
- 
**DOORS**  
 Elegant entrance door and internal flush door with wooden figure laminated.
- 
**WINDOWS**  
 Aluminum windows with powder coated paint or anodized.
- 
**PAINTS & FINISHING**  
 All internal walls having single coat mala plaster with Putty & primer finish & outside double coat plaster with Texture paint finish.



*Innovation From  
Ground To Sky!*



# ROOFTOP LAYOUT



## AMENITIES

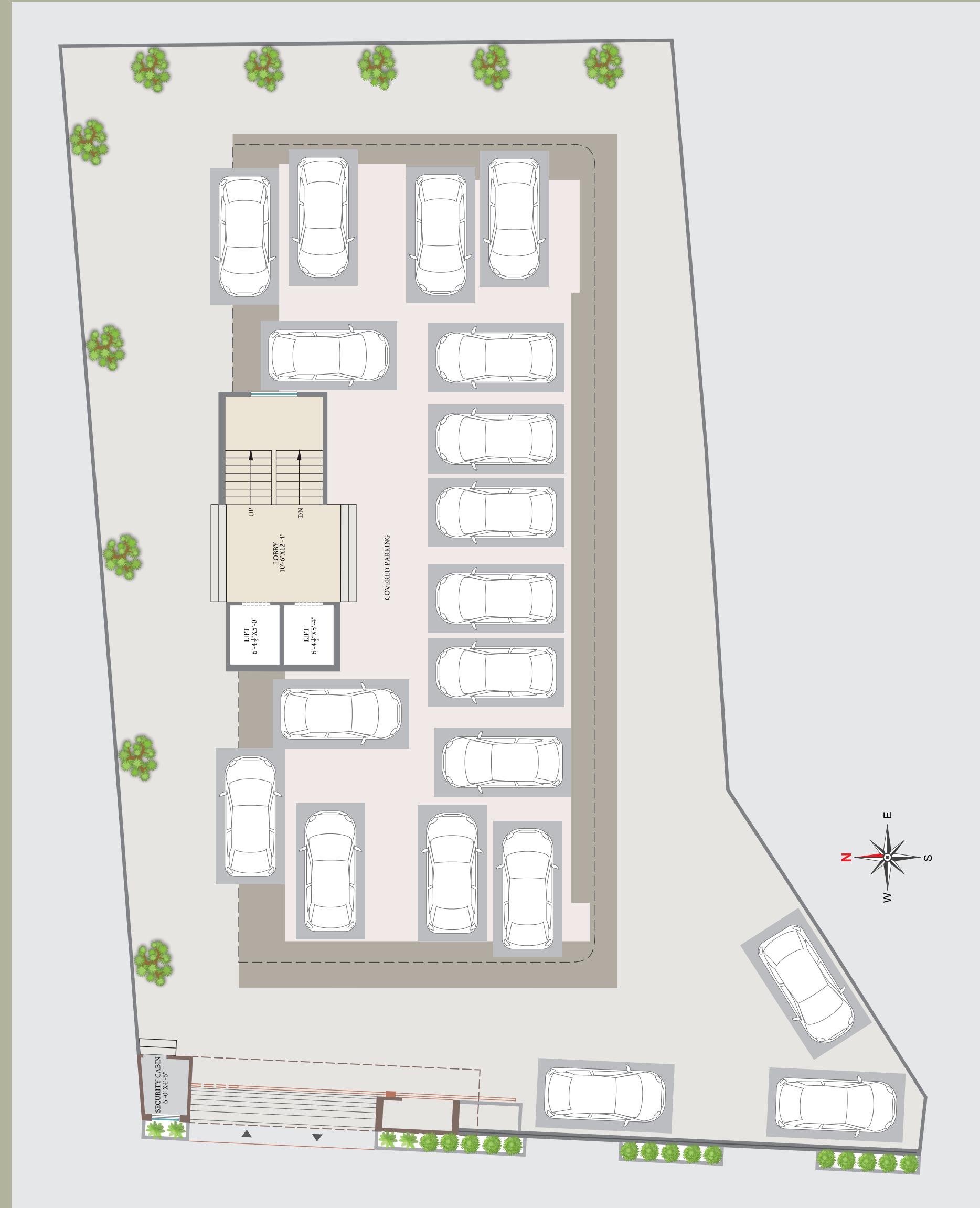
- More than 70% of open Landscape area
- Allotted Car Parking
- Yoga on Terrace
- Gymnasium
- Indoor Games
- Open Air Amphitheater
- Multipurpose Hall
- CCTV in All Common Area
- Two Flats on Each Floor
- Cafeteria



*Apartments Tailored to Your Highest Standards*



# GROUND FLOOR LAYOUT



*Setting New Standards for a  
Modern Lifestyle*





BRIDGING THE GAP BETWEEN

*Convenience & Luxury*



aldea PRIMERO  
*Redefining Modern Luxury*